



Armada
grain company ©

EQUINE FEED



73180 Fulton PO Box 918 • Armada, MI 48005
(586) 784-5911 • fax (586) 784-5918
armadagrains.com

AG 12% RANCH HORSE PELLETT

For mature horses in light work or idle.

Guaranteed Analysis

| | | |
|---------------|-----------|-------------|
| Crude Protein | (Min) | 12.0 % |
| Crude Fat | (Min) | 3.0 % |
| Crude Fiber | (Max) | 15.0 % |
| Calcium | (Min/Max) | 0.2-0.7 % |
| Phosphorus | (Min) | 0.6 % |
| Salt | (Min/Max) | 0.4-0.9 % |
| Zinc | (Min) | 150 ppm |
| Copper | (Min) | 60 ppm |
| Selenium | (Min) | 0.6 ppm |
| Vitamin A | (Min) | 5,000 IU/lb |
| Vitamin D | (Min) | 400 IU/lb |
| Vitamin E | (Min) | 50 IU/lb |
| Biotin, H | (Min) | 0.3 mg/lb |

Processed Grain By-Products, Roughage Products, Grain Products, Molasses Products, Calcium Carbonate, Yeast Culture (Saccharomyces cerevisiae), Salt, Biotin, Natural & Artificial Flavoring, Silicon Dioxide, Choline Chloride, Zinc Amino Acid Complex, Zinc Sulfate, Vitamin E Supplement, Ferrous Sulfate, Copper Sulfate, Copper Amino Acid Complex, Manganese Sulfate, Selenium Yeast, Manganese Proteinates, Sodium Selenite, Niacin Supplement, d-Calcium Pantothenate, Folic Acid, Vitamin A Acetate, Vitamin D3 Supplement, Vitamin B12 Supplement, Pyridoxine Hydrochloride, Riboflavin Supplement, Menadione Sodium Bisulfite Complex, Ethylenediamine Dihydroiodide, Thiamine Mononitrate, Cobalt Carbonate, Mineral Oil.

AG 12% HG HONEY SWEET

High oat texturized feed for mature horses with added pre and probiotics.

Guaranteed Analysis

| | | |
|---------------|-----------|-------------|
| Crude Protein | (Min) | 12.0% |
| Lysine | (Min) | 0.6% |
| Methionine | (Min) | 0.1% |
| Crude Fat | (Min) | 4.5% |
| Crude Fiber | (Max) | 8.0% |
| Calcium | (Min/Max) | 0.1-0.6% |
| Phosphorus | (Min) | 0.50% |
| Salt | (Min/Max) | 0.5-0.9% |
| Zinc | (Min) | 85 ppm |
| Copper | (Min) | 35 ppm |
| Selenium | (Min) | 0.3 ppm |
| Vitamin A | (Min) | 5,600 Iu/lb |
| Vitamin D | (Min) | 680 Iu/lb |
| Vitamin E | (Min) | 90 Iu/lb |
| Biotin | (Min) | 0.4 mg/lb |

Oats, Yellow Corn, Soybean Oil, Salt, Cane Molasses, Vegetable Oil, Dehulled Soybean Meal, Wheat Middlings, Monocalcium Phosphate, Heat Processed Soybeans, Calcium Carbonate, Dehydrated Alfalfa Meal, Molasses Products, Yeast Culture (Saccharomyces cerevisiae), Magnesium Oxide, Hydrolyzed yeast, Dried Lactobacillus acidophilus fermentation product, Dried Lactobacillus casei fermentation product, Dried Enterococcus faecius fermentation product, Dried Bifidobacterium longum fermentatin product, Dried Aspergillus oryzae fermentation product, Biotin, Vitamin E Supplement, Natural & Artificial Flavoring, Silicon Dioxide, Roughage Products, Vitamin A Acetate, Vitamin D3 Supplement, Choline Chloride, Zinc Amino Acid Complex, Zinc Sulfate, Ferrous Sulfate, Copper Sulfate, Copper Amino Acid Complex, Manganese Sulfate, Selenium Yeast, Manganese Proteinates, Sodium Selenite, Niacin Supplement, d-Calcium Pantothenate, Folic Acid, Vitamin B12 Supplement, Pyridoxine Hydrochloride, Riboflavin Supplement, Menadione Sodium Bisulfite Complex, Ethylenediamine Dihydroiodide, Thiamine Mononitrate, Cobalt Carbonate, Mineral Oil.

AG 12% RANCH HORSE SWEET FEED

For mature horses in light work or idle.

Guaranteed Analysis

| | | |
|---------------|-----------|------------|
| Crude Protein | (Min) | 12.0 % |
| Crude Fat | (Min) | 3.0 % |
| Crude Fiber | (Max) | 7.5 % |
| Calcium | (Min/Max) | 0.4-0.9 % |
| Phosphorus | (Min) | 0.5 % |
| Salt | (Min/Max) | 0.3-0.8 % |
| Zinc | (Min) | 90 ppm |
| Copper | (Min) | 20 ppm |
| Selenium | (Min) | 0.3 ppm |
| Vitamin A | (Min) | 3200 IU/lb |
| Vitamin D | (Min) | 430 IU/lb |
| Vitamin E | (Min) | 20 IU/lb |
| Biotin, H | (Min) | 0.2 mg/lb |

Grain Products, Molasses Products, Calcium Propionate, Processed Grain By-Products, Plant Protein Products, Calcium Carbonate, Yeast Culture (*Saccharomyces cerevisiae*), Salt, Biotin, Monocalcium Phosphate, Zinc Sulfate, Vitamin D3 Supplement, Roughage Products, Wheat Middlings, Natural & Artificial Flavoring, Silicon Dioxide, Choline Chloride, Zinc Amino Acid Complex, Vitamin E Supplement, Ferrous Sulfate, Copper Sulfate, Copper Amino Acid Complex, Manganese Sulfate, Selenium Yeast, Manganese Proteinates, Sodium Selenite, Niacin Supplement, d-Calcium Pantothenate, Folic Acid, Vitamin A Acetate, Vitamin B12 Supplement, Pyridoxine Hydrochloride, Riboflavin Supplement, Menadione Sodium Bisulfite Complex, Ethylenediamine Dihydroiodide, Thiamine Mononitrate, Cobalt Carbonate, Mineral Oil.

AG 12% COMPLETE PELLET

A hay extender or complete feed for mature horses that have issues eating hay.

Guaranteed Analysis

| | | |
|---------------|-----------|-------------|
| Crude Protein | (Min) | 12.0% |
| Crude Fat | (Min) | 3.0% |
| Crude Fiber | (Max) | 20.0% |
| Calcium | (Min/Max) | 0.5-1.0% |
| Phosphorus | (Min) | 0.4% |
| Salt | (Min/Max) | 0.4-0.9% |
| Zinc | (Min) | 100 ppm |
| Copper | (Min) | 40 ppm |
| Selenium | (Min) | 0.4 ppm |
| Vitamin A | (Min) | 3,600 IU/lb |
| Vitamin D | (Min) | 280 IU/lb |
| Vitamin E | (Min) | 40 IU/lb |

Wheat Middlings, Soybean Hulls, Dehydrated Alfalfa Meal, Yellow Corn, Oats, Calcium Carbonate, Heat Processed Flaxseed, Salt, Hydrolyzed yeast, Dried *Lactobacillus acidophilus* fermentation product, Dried *Lactobacillus casei* fermentation product, Dried *Enterococcus faecius* fermentation product, Dried *Bifidobacterium longum* fermentatin product, Dried *Aspergillus oryzae* fermentation product, Choline Chloride, Zinc Amino Acid Complex, Zinc Sulfate, Roughage Products, Vitamin E Supplement, Ferrous Sulfate, Copper Sulfate, Copper Amino Acid Complex, Manganese Sulfate, Selenium Yeast, Manganese Proteinates, Sodium Selenite, Niacin Supplement, d-Calcium Pantothenate, Folic Acid, Biotin, Vitamin A Acetate, Vitamin D3 Supplement, Vitamin B12 Supplement, Pyridoxine Hydrochloride, Riboflavin Supplement, Menadione Sodium Bisulfite Complex, Ethylenediamine Dihydroiodide, Thiamine Mononitrate, Cobalt Carbonate, Mineral Oil.

HIGH ENERGY SENIOR

High fat feed for mature horses

Guaranteed Analysis

| | | |
|---------------|-----------|-------------|
| Crude Protein | (Min) | 14.0% |
| Crude Fat | (Min) | 10.0% |
| Crude Fiber | (Max) | 17.0% |
| Calcium | (Min/Max) | 0.5-1.0% |
| Phosphorus | (Min) | 0.6% |
| Salt | (Min/Max) | 0.4-0.6% |
| Zinc | (Min) | 110 ppm |
| Copper | (Min) | 45 ppm |
| Selenium | (Min) | 0.4 ppm |
| Vitamin A | (Min) | 4,760 Iu/lb |
| Vitamin D | (Min) | 310 Iu/lb |
| Vitamin E | (Min) | 85 Iu/lb |
| Biotin, H | (Min) | 0.2 mg/lb |

Wheat Middlings, Heat Processed Soybeans, Rice Bran, Wheat, Heat Processed Flaxseed, Cane Molasses, Soybean Hulls, Soybean Oil, Dehydrated Alfalfa Meal, Oats, Maize Distillers Grains, Oats Steam Rolled, Dehulled Soybean Meal, Dried Beet Pulp, Calcium Carbonate, Monocalcium Phosphate, Salt, Yeast Culture (*Saccharomyces cerevisiae*), Potassium Chloride, Hydrolyzed yeast, Dried *Lactobacillus acidophilus* fermentation product, Dried *Lactobacillus casei* fermentation product, Dried *Enterococcus faecius* fermentation product, Dried *Bifidobacterium longum* fermentatin product, Dried *Aspergillus oryzae* fermentation product, Vitamin A Acetate, Roughage Products, Choline Chloride, Zinc Amino Acid Complex, Zinc Sulfate, Vitamin E Supplement, Ferrous Sulfate, Copper Sulfate, Copper Amino Acid Complex, Manganese Sulfate, Selenium Yeast, Manganese Proteiniate, Sodium Selenite, Niacin Supplement, d-Calcium Pantothenate, Folic Acid, Vitamin A Acetate, Vitamin E Acetate, Biotin, Vitamin D3 Supplement, Vitamin B12 Supplement, Pyridoxine Hydrochloride, Riboflavin Supplement, Menadione Sodium Bisulfite Complex, Ethylenediamine Dihydroiodide, Thiamine Mononitrate, Cobalt Carbonate, Mineral Oil.

AG SENIOR HORSE FEED

Highly palatable with high fiber for mature horses and horses having issues eating hay.

Guaranteed Analysis

| | | |
|---------------|-----------|-------------|
| Crude Protein | (Min) | 14.0 % |
| Lysine | (Min) | 0.7 % |
| Methionine | (Min) | 0.1 % |
| Crude Fat | (Min) | 5.0 % |
| Crude Fiber | (Max) | 19.0 % |
| Calcium | (Min/Max) | 0.5-1.0 % |
| Phosphorus | (Min) | 0.7 % |
| Salt | (Min/Max) | 0.5-1.0 % |
| Zinc | (Min) | 120 ppm |
| Copper | (Min) | 50 ppm |
| Selenium | (Min) | 0.5 ppm |
| Vitamin A | (Min) | 5,400 IU/lb |
| Vitamin D | (Min) | 330 IU/lb |
| Vitamin E | (Min) | 40 IU/lb |
| Biotin, H | (Min) | 0.1 mg/lb |

Wheat Middlings, Soybean Hulls, Dehydrated Alfalfa Meal, Oats, Cane Molasses, Maize Distillers Grains, Dehulled Soybean Meal, Yellow Corn, Dried Beet Pulp, Soybean Oil, Calcium Carbonate, Soybean Oil, Monocalcium Phosphate, Heat Processed Flaxseed, Salt, Yeast Culture (Saccharomyces cerevisiae), Hydrolyzed yeast, Dried Lactobacillus acidophilus fermentation product, Dried Lactobacillus casei fermentation product, Dried Enterococcus faecius fermentation product, Dried Bifidobacterium longum fermentatin product, Dried Aspergillus oryzae fermentation product, Vitamin A Acetate, Roughage Products, Choline Chloride, Zinc Amino Acid Complex, Zinc Sulfate, Vitamin E Supplement, Ferrous Sulfate, Copper Sulfate, Copper Amino Acid Complex, Manganese Sulfate, Selenium Yeast, Manganese Proteiniate, Sodium Selenite, Niacin Supplement, d-Calcium Pantothenate, Folic Acid, Biotin, Vitamin D3 Supplement, Vitamin B12 Supplement, Pyridoxine Hydrochloride, Riboflavin Supplement, Menadione Sodium Bisulfite Complex, Ethylenediamine Dihydroiodide, Thiamine Mononitrate, Cobalt Carbonate, Mineral Oil.



AG SAFE & CALM

Low sugar & starch pellet for mature horses with added pre and probiotics for gut health.

Guaranteed Analysis

| | | |
|---------------|-----------|-------------|
| Crude Protein | (Min) | 14.0% |
| Lysine | (Min) | 0.7% |
| Methionine | (Min) | 0.2% |
| Crude Fat | (Min) | 6.0% |
| Crude Fiber | (Max) | 20.0% |
| Nsc | | 15.5% |
| Calcium | (Min/Max) | 1.0-1.5% |
| Phosphorus | (Min) | 0.40% |
| Salt | (Min/Max) | 0.3-0.8% |
| Zinc | (Min) | 260 ppm |
| Copper | (Min) | 44 ppm |
| Selenium | (Min) | 0.4 ppm |
| Vitamin A | (Min) | 5,500 Iu/lb |
| Vitamin D | (Min) | 680 Iu/lb |
| Vitamin E | (Min) | 65 Iu/lb |
| Biotin | (Min) | 0.5 mg/lb |

Soybean Hulls, Wheat Middlings, Dehydrated Alfalfa Meal, Dried Beet Pulp, Heat Processed Soybeans, Maize Distillers Grains, Soybean Oil, Calcium Carbonate, Yeast Culture (*Saccharomyces cerevisiae*), Biotin, Salt, Hydrolyzed yeast, Dried *Lactobacillus acidophilus* fermentation product, Dried *Lactobacillus casei* fermentation product, Dried *Enterococcus faecius* fermentation product, Dried *Bifidobacterium longum* fermentatin product, Dried *Aspergillus oryzae* fermentation product, Vitamin D3 Supplement, Roughage Products, Vitamin A Acetate, Zinc Methionine Complex, Hydrolyzed Yeast Culture, *Saccharomyces cersvisiae*, Natural & Artificial Flavoring, Silicon Dioxide, Vitamin E Supplement, Choline Chloride, Zinc Amino Acid Complex, Zinc Sulfate, Ferrous Sulfate, Copper Sulfate, Copper Amino Acid Complex, Manganese Sulfate, Selenium Yeast, Manganese Proteinat, Sodium Selenite, Niacin Supplement, d-Calcium Pantothenate, Folic Acid, Vitamin B12 Supplement, Pyridoxine Hydrochloride, Riboflavin Supplement, Menadione Sodium Bisulfite Complex, Ethylenediamine Dihydroiodide, Thiamine Mononitrate, Cobalt Carbonate, Mineral Oil.



*Feed their body,
train their mind,
love their spirit,
and they'll feed
your soul.*



STABLE CHOICE

Pelleted feed for mature horses that are in light work or idle.

Guaranteed Analysis

| | | |
|---------------|-----------|------------|
| Crude Protein | (Min) | 12.0% |
| Crude Fat | (Min) | 4.0% |
| Crude Fiber | (Max) | 12.0% |
| Calcium | (Min/Max) | 0.8-1.3% |
| Phosphorus | (Min) | 0.60% |
| Salt | (Min/Max) | 0.3-0.8% |
| Zinc | (Min) | 90 ppm |
| Copper | (Min) | 35 ppm |
| Selenium | (Min) | 0.4 ppm |
| Vitamin A | (Min) | 3,000iu/lb |
| Vitamin D | (Min) | 240 lu/lb |
| Vitamin E | (Min) | 30 IU/lb |

Wheat Middlings, Yellow Corn, Dried Beet Pulp, Soybean Hulls, Maize Distillers Grains, Dehydrated Alfalfa Meal, Dehulled Soybean Meal, Calcium Carbonate, Molasses Products, Heat Processed Flaxseed, Soybean Oil, Monocalcium Phosphate, Salt, Choline Chloride, Zinc Amino Acid Complex, Zinc Sulfate, Roughage Products, Vitamin E Supplement, Ferrous Sulfate, Copper Sulfate, Copper Amino Acid Complex, Manganese Sulfate, Selenium Yeast, Manganese Proteinate, Sodium Selenite, Niacin Supplement, d-Calcium Pantothenate, Folic Acid, Biotin, Vitamin A Acetate, Vitamin D3 Supplement, Vitamin B12 Supplement, Pyridoxine Hydrochloride, Riboflavin Supplement, Menadione Sodium Bisulfite Complex, Ethylenediamine Dihydroiodide, Thiamine Mononitrate, Cobalt Carbonate, Mineral Oil.

SPIRIT 14

For mature horses that need added energy.

Guaranteed Analysis

| | | |
|---------------|-----------|-------------|
| Crude Protein | (Min) | 14.0% |
| Crude Fat | (Min) | 6.0% |
| Crude Fiber | (Max) | 9.0% |
| Calcium | (Min/Max) | 0.5-1.0% |
| Phosphorus | (Min) | 0.60% |
| Salt | (Min/Max) | 0.5-0.9% |
| Zinc | (Min) | 220 ppm |
| Copper | (Min) | 60 ppm |
| Selenium | (Min) | 0.6 ppm |
| Vitamin A | (Min) | 5,000 lu/lb |
| Vitamin D | (Min) | 400 lu/lb |
| Vitamin E | (Min) | 70 lu/lb |
| Biotin | (Min) | 0.1 mg/lb |

Wheat Middlings, Yellow Corn, Maize Distillers Grains, Dehulled Soybean Meal, Dehydrated Alfalfa Meal, Dried Beet Pulp, Molasses Products, Heat Processed Flaxseed, Calcium Carbonate, Soybean Oil, Monocalcium Phosphate, Salt, Yeast Culture (Saccharomyces cerevisiae), Zinc Methionine Complex, Sodium Selenite, Iron Oxide, Vitamin E Supplement, Choline Chloride, Zinc Amino Acid Complex, Zinc Sulfate, Roughage Products, Ferrous Sulfate, Copper Sulfate, Copper Amino Acid Complex, Manganese Sulfate, Selenium Yeast, Manganese Proteinate, Sodium Selenite, Niacin Supplement, d-Calcium Pantothenate, Folic Acid, Biotin, Vitamin A Acetate, Vitamin D3 Supplement, Vitamin B12 Supplement, Pyridoxine Hydrochloride, Riboflavin Supplement, Menadione Sodium Bisulfite Complex, Ethylenediamine Dihydroiodide, Thiamine Mononitrate, Cobalt Carbonate, Mineral Oil.



© REFINED IDEAS | Heidi Lohman

MARE FOAL TEXURIZED

Designed for growing foals and broodmares.

Guaranteed Analysis

| | | |
|---------------|-----------|-------------|
| Crude Protein | (Min) | 16.0% |
| Crude Fat | (Min) | 4.0% |
| Crude Fiber | (Max) | 6.0% |
| Calcium | (Min/Max) | 0.2-0.7% |
| Phosphorus | (Min) | 0.7% |
| Salt | (Min/Max) | 0.3-0.8% |
| Zinc | (Min) | 80 ppm |
| Copper | (Min) | 35 ppm |
| Selenium | (Min) | 0.3 ppm |
| Vitamin A | (Min) | 5,200 IU/lb |
| Vitamin D | (Min) | 630 IU/lb |
| Vitamin E | (Min) | 80 IU/lb |
| Biotin | (Min) | 0.3 mg/lb |

Yellow Corn, Oats, Dehulled Soybean Pellets, Soybean Oil, Cane Molasses, Dehulled Soybean Meal, Wheat Middlings, Monocalcium Phosphate, Heat Processed Soybeans, Calcium Carbonate, Dehydrated Alfalfa Meal, Molasses Products, Soybean Oil, Cane Molasses Yeast Culture (*Saccharomyces cerevisiae*), Salt, Magnesium Oxide, Hydrolyzed yeast, Dried *Lactobacillus acidophilus* fermentation product, Dried *Lactobacillus casei* fermentation product, Dried *Enterococcus faecius* fermentation product, Dried *Bifidobacterium longum* fermentatin product, Dried *Aspergillus oryzae* fermentation product, Biotin, Vitamin E Supplement, Natural & Artificial Flavoring, Silicon Dioxide, Roughage Products, Vitamin A Acetate, Vitamin D3 Supplement, Choline Chloride, Zinc Amino Acid Complex, Zinc Sulfate, Ferrous Sulfate, Copper Sulfate, Copper Amino Acid Complex, Manganese Sulfate, Selenium Yeast, Manganese Proteiniate, Sodium Selenite, Niacin Supplement, d-Calcium Pantothenate, Folic Acid, Vitamin B12 Supplement, Pyridoxine Hydrochloride, Riboflavin Supplement, Menadione Sodium Bisulfite Complex, Ethylenediamine Dihydroiodide, Thiamine Mononitrate, Cobalt Carbonate, Mineral Oil.

AG HIGH FAT NUGGET

High Fat Supplement for all horses

Guaranteed Analysis

| | | |
|---------------|-----------|-------------|
| Crude Protein | (Min) | 16.0% |
| Crude Fat | (Min) | 21.0% |
| Crude Fiber | (Max) | 10.0% |
| Calcium | (Min/Max) | 0.6-1.1% |
| Phosphorus | (Min) | 0.1% |
| Salt | (Min/Max) | 0.3-0.8% |
| Zinc | (Min) | 100 ppm |
| Copper | (Min) | 40 ppm |
| Selenium | (Min) | 0.4 ppm |
| Vitamin A | (Min) | 3,500 Iu/lb |
| Vitamin D | (Min) | 280 Iu/lb |
| Vitamin E | (Min) | 260 Iu/lb |
| Biotin, H | (Min) | 0.5 mg/lb |

Heat Processed Soybeans, Rice Bran, Wheat, Heat Processed Flaxseed, Soybean Oil, Oats Steam Rolled, Soybean Hulls, Calcium Carbonate, Potassium Chloride, Salt, Hydrolyzed yeast, Dried Lactobacillus acidophilus fermentation product, Dried Lactobacillus casei fermentation product, Dried Enterococcus faecius fermentation product, Dried Bifidobacterium longum fermentatin product, Dried Aspergillus oryzae fermentation product, Vitamin E Acetate, Biotin, Esters of L-ascorbic acid, Choline Chloride, Zinc Amino Acid Complex, Zinc Sulfate, Roughage Products, Vitamin E Supplement, Ferrous Sulfate, Copper Sulfate, Copper Amino Acid Complex, Manganese Sulfate, Selenium Yeast, Manganese Proteinat, Sodium Selenite, Niacin Supplement, d-Calcium Pantothenate, Folic Acid, Vitamin A Acetate, Vitamin D3 Supplement, Vitamin B12 Supplement, Pyridoxine Hydrochloride, Riboflavin Supplement, Menadione Sodium Bisulfite Complex, Ethylenediamine Dihydroiodide, Thiamine Mononitrate, Cobalt Carbonate, Mineral Oil.



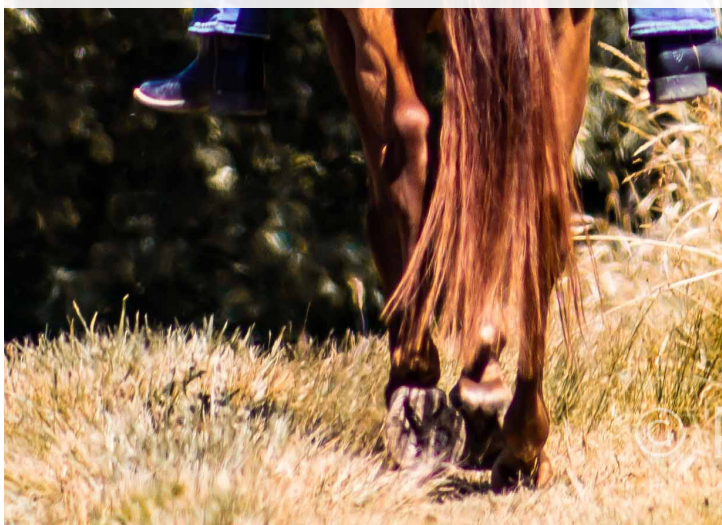
32% HORSE SUPPLEMENT

Concentrated feed for all life stages with all the vitamins, minerals, and amino acids your horse needs. Use as a top dress or low calorie feed alone.

Guaranteed Analysis

| | | |
|---------------|-----------|--------------|
| Crude Protein | (Min) | 32.0 % |
| Lysine | (Min) | 2.1 % |
| Methionine | (Min) | 0.4 % |
| Crude Fat | (Min) | 5.0 % |
| Crude Fiber | (Max) | 6.0 % |
| NSC | (Max) | 13.5 % |
| Calcium | (Min/Max) | 2.5-3.5 % |
| Phosphorus | (Min) | 1.6 % |
| Salt | (Min/Max) | 1.4-1.9 % |
| Zinc | (Min) | 500 ppm |
| Copper | (Min) | 200 ppm |
| Selenium | (Min) | 2 ppm |
| Vitamin A | (Min) | 32,000 IU/lb |
| Vitamin D | (Min) | 3,900 IU/lb |
| Vitamin E | (Min) | 520 IU/lb |
| Biotin, H | (Min) | 2.2 mg/lb |

Dehulled Soybean Meal, Heat Processed Soybeans, Wheat Middlings, Dehydrated Alfalfa Meal, Calcium Carbonate, Monocalcium Phosphate, Yeast Culture (Saccharomyces cerevisiae), Molasses Products, Soybean Oil, Salt, Magnesium Oxide, Hydrolyzed yeast, Dried Lactobacillus acidophilus fermentation product, Dried Lactobacillus casei fermentation product, Dried Enterococcus faecius fermentation product, Dried Bifidobacterium longum fermentatin product, Dried Aspergillus oryzae fermentation product, Biotin, Vitamin E Supplement, Natural & Artificial Flavoring, Silicon Dioxide, Roughage Products, Vitamin A Acetate, Vitamin D3 Supplement, Choline Chloride, Zinc Amino Acid Complex, Zinc Sulfate, Ferrous Sulfate, Copper Sulfate, Copper Amino Acid Complex, Manganese Sulfate, Selenium Yeast, Manganese Proteinate, Sodium Selenite, Niacin Supplement, d-Calcium Pantothenate, Folic Acid, Vitamin B12 Supplement, Pyridoxine Hydrochloride, Riboflavin Supplement, Menadione Sodium Bisulfite Complex, Ethylenediamine Dihydroiodide, Thiamine Mononitrate, Cobalt Carbonate, Mineral Oil.



A woman with long blonde hair, wearing a dark cowboy hat, a brown long-sleeved shirt, and dark jeans, is leading a brown horse with a light-colored mane in a lush green field. She is holding the horse's lead rope. The background shows a line of trees and a building under a bright sky.

**Our passion is
making sure your
passion stays
healthy.**

*If you have any questions please
contact us at
(586) 784-5911
armadagrain.com*